

Cumberland Rd between Reynolds Rd and Union St

November 23, 2020 To November 27, 2020



The data presented here is for information purposes only and should not be considered authoritative for construction, geotechnical, engineering, navigational, legal, or other site-specific uses. The information shared is owned by the Transportation Division of the Engineering Department at the District of Saanich. Accuracy is not guaranteed.

Start Date: 23-Nov-20
 Start Time: 23:27
 Station ID: R0272-03

Location 1: Cumberland Rd between Reynolds Rd and Union St

Note:

DATE:	November 23, 2020		November 24, 2020		November 25, 2020		November 26, 2020		November 27, 2020		WK AVG		WK AVG	HOURLY
	MON		TUE		WED		THURS		FRI		NB	SB	CH 1+2	%
Time:	NB	SB	NB	SB	NB	SB	NB	SB	NB	SB	NB	SB		
12-1 AM			0	0	0	0	0	1			0	0	0	0.1%
1-2 AM			0	0	0	0	0	0			0	0	0	0.0%
2-3 AM			1	0	0	0	1	0			1	0	1	0.2%
3-4 AM			0	0	0	0	0	0			0	0	0	0.0%
4-5 AM			0	0	0	0	1	0			0	0	0	0.1%
5-6 AM			1	0	0	0	0	0			0	0	0	0.1%
6-7 AM			1	1	2	3	3	0			2	1	3	1.1%
7-8 AM			5	3	5	5	6	4			5	4	9	3.1%
8-9 AM			17	9	15	9	18	19			17	12	29	9.6%
9-10 AM			9	4	11	10	10	15			10	10	20	6.5%
10-11 AM			8	9	7	7	13	8			9	8	17	5.7%
11-12 PM			18	12	11	5	12	9			14	9	22	7.4%
12-1 PM			14	14	12	9	9	13			12	12	24	7.8%
1-2 PM			13	12	10	9	13	9			12	10	22	7.3%
2-3 PM			15	13	15	13	23	24			18	17	34	11.4%
3-4 PM			15	20	19	17	18	19			17	19	36	11.9%
4-5 PM			17	12	16	18	15	24			16	18	34	11.2%
5-6 PM			8	11	13	11	5	11			9	11	20	6.5%
6-7 PM			5	6	3	7	5	6			4	6	11	3.5%
7-8 PM			6	2	4	4	5	5			5	4	9	2.9%
8-9 PM			4	1	1	5	5	2			3	3	6	2.0%
9-10 PM			0	2	2	3	1	2			1	2	3	1.1%
10-11 PM			1	1	0	0	1	1			1	1	1	0.4%
11-12 AM			0	0	0	0	0	0			0	0	0	0.0%
LANES			158	132	146	135	164	172			156	146	302	100.0%
TOTAL			290		281		336				310			
	MON		TUE		WED		THURS		FRI		WK AVG			

PEAK HOUR					TOTAL VEHICALS-PEAK PERIODS		2 HOUR PEAK INTERVALS				
MAX. 7 - 9 am PEAK HOUR	29	⇒	9.6%	between 8-9 AM	138	⇒	6 HR TOTAL	2 HR AM (7 - 9 AM)			
MAX. 7 - 11 am PEAK HOUR	29	⇒	9.6%	between 8-9 AM	92	⇒	4 HR TOTAL	VEH / HR	VEH / 2HR	2 HR %	
MAX. 11 am - 1 pm PEAK HOUR	24	⇒	7.8%	between 12-1 PM				7-8 AM	9	38	12.7%
MAX. 11 am - 3 pm PEAK HOUR	34	⇒	11.4%	between 2-3 PM				8-9 AM	29		
MAX. 4 - 6 pm PEAK HOUR	34	⇒	11.2%	between 4-5 PM				2 HR NOON (11 - 1 PM)			
MAX. 3 - 6 pm PEAK HOUR	36	⇒	11.9%	between 3-4 PM				VEH / HR	VEH / 2HR	2 HR %	
								11-12 PM	22	46	15.2%
								12-1 PM	24		
								2 HR PM (4 - 6 PM)			
								VEH / HR	VEH / 2HR	2 HR %	
								4-5 PM	34	54	17.8%
								5-6 PM	20		

Cumberland Rd between Reynolds Rd and Union St

Northbound

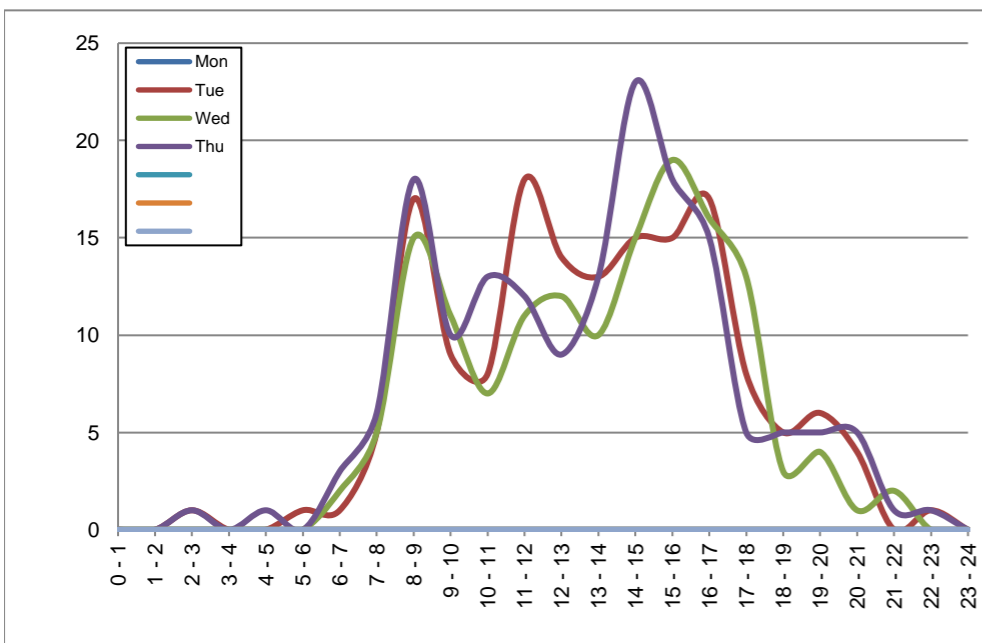
November 23, 2020 to November 26, 2020

Hourly Volumes

Time Period	Mon	Tue	Wed	Thu			
	Nov 23	Nov 24	Nov 25	Nov 26			
0 - 1		0	0	0			
1 - 2		0	0	0			
2 - 3		1	0	1			
3 - 4		0	0	0			
4 - 5		0	0	1			
5 - 6		1	0	0			
6 - 7		1	2	3			
7 - 8		5	5	6			
8 - 9		17	15	18			
9 - 10		9	11	10			
10 - 11		8	7	13			
11 - 12		18	11	12			
12 - 13		14	12	9			
13 - 14		13	10	13			
14 - 15		15	15	23			
15 - 16		15	19	18			
16 - 17		17	16	15			
17 - 18		8	13	5			
18 - 19		5	3	5			
19 - 20		6	4	5			
20 - 21		4	1	5			
21 - 22		0	2	1			
22 - 23		1	0	1			
23 - 24		0	0	0			
Day Total		158	146	164			

15-Minute Volumes

Time Start	Mon	Tue	Wed	Thu			
	Nov 23	Nov 24	Nov 25	Nov 26			
0:00		0	0	0			
0:15		0	0	0			
0:30		0	0	0			
0:45		0	0	0			
1:00		0	0	0			
1:15		0	0	0			
1:30		0	0	0			
1:45		0	0	0			
2:00		1	0	1			
2:15		0	0	0			
2:30		0	0	0			
2:45		0	0	0			
3:00		0	0	0			
3:15		0	0	0			
3:30		0	0	0			
3:45		0	0	0			
4:00		0	0	0			
4:15		0	0	0			
4:30		0	0	0			
4:45		0	0	1			
5:00		0	0	0			
5:15		0	0	0			
5:30		0	0	0			
5:45		1	0	0			
6:00		0	0	0			
6:15		0	0	1			
6:30		0	0	0			
6:45		1	2	2			
7:00		0	1	1			
7:15		4	2	2			
7:30		1	2	3			
7:45		0	0	0			
8:00		2	4	6			
8:15		3	5	5			
8:30		7	3	4			
8:45		5	3	3			
9:00		2	4	5			
9:15		1	3	0			
9:30		2	2	1			
9:45		4	2	4			
10:00		2	1	1			
10:15		5	2	4			
10:30		1	2	4			
10:45		0	2	4			
11:00		4	7	3			
11:15		5	2	3			
11:30		4	1	5			
11:45		5	1	1			
12:00			4	0	2		
12:15			4	5	5		
12:30			4	3	2		
12:45			2	4	0		
13:00			2	2	4		
13:15			3	4	2		
13:30			4	2	2		
13:45			4	2	5		
14:00			5	2	6		
14:15			2	1	0		
14:30			2	4	12		
14:45			6	8	5		
15:00			2	5	1		
15:15			8	4	6		
15:30			3	3	7		
15:45			2	7	4		
16:00			5	4	3		
16:15			5	8	4		
16:30			4	2	4		
16:45			3	2	4		
17:00			3	3	1		
17:15			2	5	1		
17:30			1	3	1		
17:45			2	2	2		
18:00			1	0	1		
18:15			1	2	2		
18:30			1	1	1		
18:45			2	0	1		
19:00			2	1	1		
19:15			1	1	2		
19:30			2	1	1		
19:45			1	1	1		
20:00			2	1	0		
20:15			0	0	1		
20:30			2	0	3		
20:45			0	0	1		
21:00			0	2	1		
21:15			0	0	0		
21:30			0	0	0		
21:45			0	0	0		
22:00			0	0	1		
22:15			1	0	0		
22:30			0	0	0		
22:45			0	0	0		
23:00			0	0	0		
23:15			0	0	0		
23:30			0	0	0		
23:45		0	0	0	0		



Site notes:

Cumberland Rd between Reynolds Rd and Union St

Southbound

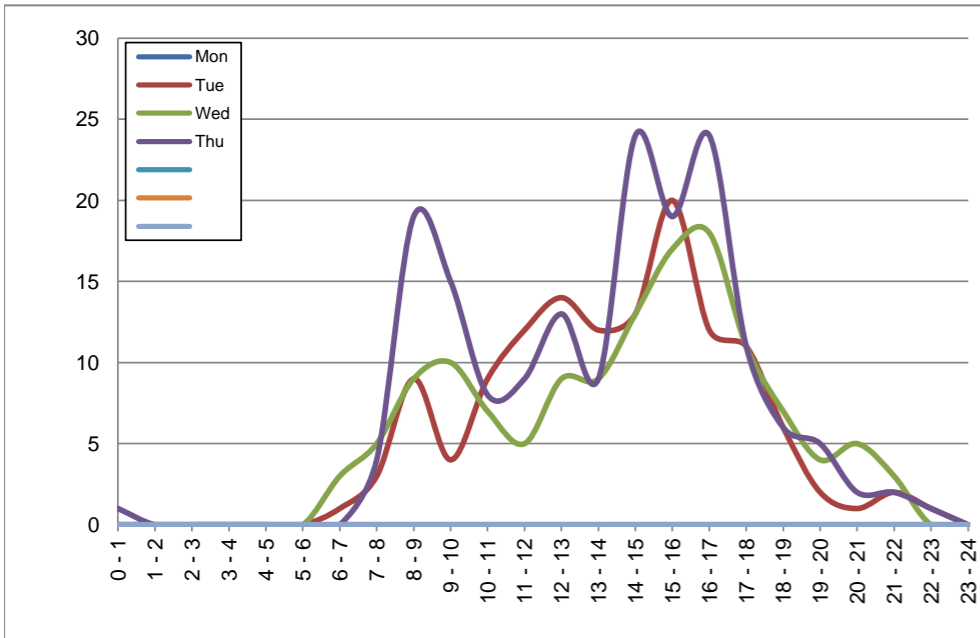
November 23, 2020 to November 26, 2020

Hourly Volumes

Time Period	Mon	Tue	Wed	Thu			
	Nov 23	Nov 24	Nov 25	Nov 26			
0 - 1		0	0	1			
1 - 2		0	0	0			
2 - 3		0	0	0			
3 - 4		0	0	0			
4 - 5		0	0	0			
5 - 6		0	0	0			
6 - 7		1	3	0			
7 - 8		3	5	4			
8 - 9		9	9	19			
9 - 10		4	10	15			
10 - 11		9	7	8			
11 - 12		12	5	9			
12 - 13		14	9	13			
13 - 14		12	9	9			
14 - 15		13	13	24			
15 - 16		20	17	19			
16 - 17		12	18	24			
17 - 18		11	11	11			
18 - 19		6	7	6			
19 - 20		2	4	5			
20 - 21		1	5	2			
21 - 22		2	3	2			
22 - 23		1	0	1			
23 - 24		0	0	0			
Day Total		132	135	172			

15-Minute Volumes

Time Start	Mon	Tue	Wed	Thu				Time Start	Mon	Tue	Wed	Thu			
	Nov 23	Nov 24	Nov 25	Nov 26					Nov 23	Nov 24	Nov 25	Nov 26			
0:00		0	0	0				12:00		4	3	4			
0:15		0	0	1				12:15		3	3	3			
0:30		0	0	0				12:30		3	1	4			
0:45		0	0	0				12:45		4	2	2			
1:00		0	0	0				13:00		3	2	3			
1:15		0	0	0				13:15		4	3	0			
1:30		0	0	0				13:30		3	4	2			
1:45		0	0	0				13:45		2	0	4			
2:00		0	0	0				14:00		2	3	8			
2:15		0	0	0				14:15		4	4	3			
2:30		0	0	0				14:30		3	2	6			
2:45		0	0	0				14:45		4	4	7			
3:00		0	0	0				15:00		5	1	2			
3:15		0	0	0				15:15		4	3	11			
3:30		0	0	0				15:30		4	3	3			
3:45		0	0	0				15:45		7	10	3			
4:00		0	0	0				16:00		4	2	3			
4:15		0	0	0				16:15		2	3	6			
4:30		0	0	0				16:30		4	9	10			
4:45		0	0	0				16:45		2	4	5			
5:00		0	0	0				17:00		4	3	5			
5:15		0	0	0				17:15		3	5	4			
5:30		0	0	0				17:30		1	3	0			
5:45		0	0	0				17:45		3	0	2			
6:00		0	0	0				18:00		2	1	3			
6:15		0	1	0				18:15		1	4	0			
6:30		1	0	0				18:30		1	2	3			
6:45		0	2	0				18:45		2	0	0			
7:00		0	0	2				19:00		1	2	1			
7:15		2	1	1				19:15		0	1	2			
7:30		0	2	1				19:30		1	1	1			
7:45		1	2	0				19:45		0	0	1			
8:00		2	1	5				20:00		0	3	1			
8:15		1	1	6				20:15		0	1	0			
8:30		2	5	4				20:30		1	1	1			
8:45		4	2	4				20:45		0	0	0			
9:00		2	2	7				21:00		1	0	1			
9:15		0	3	4				21:15		0	1	1			
9:30		1	2	1				21:30		0	2	0			
9:45		1	3	3				21:45		1	0	0			
10:00		4	2	0				22:00		1	0	0			
10:15		0	3	1				22:15		0	0	1			
10:30		1	1	2				22:30		0	0	0			
10:45		4	1	5				22:45		0	0	0			
11:00		3	0	2				23:00		0	0	0			
11:15		2	0	2				23:15		0	0	0			
11:30		4	3	1				23:30		0	0	0			
11:45		3	2	4				23:45	0	0	0	0			



Site notes:

Vehicle Speed Summary

Saanich Engineering Department

Count Id: R0272-03

Filename: Cumberland Rd between Reynolds Rd and Union St-Nov-2020.xlsm

Location: Cumberland Rd between Reynolds Rd and Union St

Note:

Direction: **North-South**

Dates: **November 23, 2020 To November 27, 2020**

Filtered data

AVG. SPEED	20 mph	31 km/h
50 % SPEED	20 mph	32 km/h
85 % SPEED	25 mph	40 km/h
95 % SPEED	27 mph	44 km/h

Location Map



Cumberland Rd between Reynolds Rd and Union St

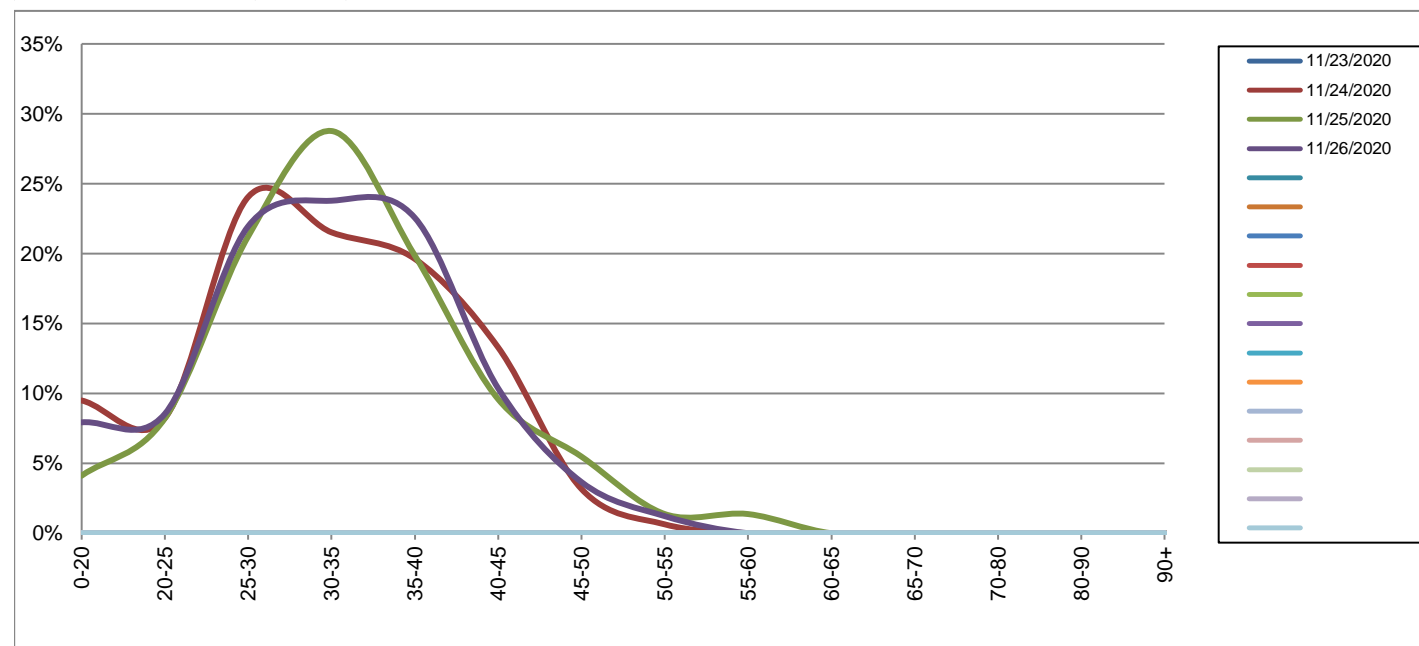
Northbound

November 23, 2020 to November 26, 2020

Daily Speed Bin Percentages															Daily Speed Bin Volumes														Total	Avg. Speed
Bin #	1	2	3	4	5	6	7	8	9	10	11	12	13	14	1	2	3	4	5	6	7	8	9	10	11	12	13	14		
Bin Speeds	0-20	20-25	25-30	30-35	35-40	40-45	45-50	50-55	55-60	60-65	65-70	70-80	80-90	90+	0-20	20-25	25-30	30-35	35-40	40-45	45-50	50-55	55-60	60-65	65-70	70-80	80-90	90+		
11/23/2020															0	0	0	0	0	0	0	0	0	0	0	0	0	0	0	
11/24/2020	9.5%	8.2%	24.1%	21.5%	19.6%	13.3%	3.2%	0.6%	0.0%	0.0%	0.0%	0.0%	0.0%	0.0%	15	13	38	34	31	21	5	1	0	0	0	0	0	0	158	31
11/25/2020	4.1%	8.2%	21.2%	28.8%	19.9%	9.6%	5.5%	1.4%	1.4%	0.0%	0.0%	0.0%	0.0%	0.0%	6	12	31	42	29	14	8	2	2	0	0	0	0	0	146	33
11/26/2020	7.9%	8.5%	22.0%	23.8%	22.6%	10.4%	3.7%	1.2%	0.0%	0.0%	0.0%	0.0%	0.0%	0.0%	13	14	36	39	37	17	6	2	0	0	0	0	0	0	164	32
Total	7.3%	8.3%	22.4%	24.6%	20.7%	11.1%	4.1%	1.1%	0.4%	0.0%	0.0%	0.0%	0.0%	0.0%	34	39	105	115	97	52	19	5	2	0	0	0	0	468	32	

Speed Data Summary

Bin #	1	2	3	4	5	6	7	8	9	10	11	12	13	14	Total
Bin Speeds	0-20	20-25	25-30	30-35	35-40	40-45	45-50	50-55	55-60	60-65	65-70	70-80	80-90	90+	
Survey Total	34	39	105	115	97	52	19	5	2	0	0	0	0	0	468
% Total	7.3%	8.3%	22.4%	24.6%	20.7%	11.1%	4.1%	1.1%	0.4%	0.0%	0.0%	0.0%	0.0%	0.0%	100%
Accumulated %	7.3%	15.6%	38.0%	62.6%	83.3%	94.4%	98.5%	99.6%	100.0%	100.0%	100.0%	100.0%	100.0%	100.0%	
Inverse Accum. %	92.7%	84.4%	62.0%	37.4%	16.7%	5.6%	1.5%	0.4%	0.0%	0.0%	0.0%	0.0%	0.0%	0.0%	
Average Speed	32 KM/H														



Site notes:

Cumberland Rd between Reynolds Rd and Union St

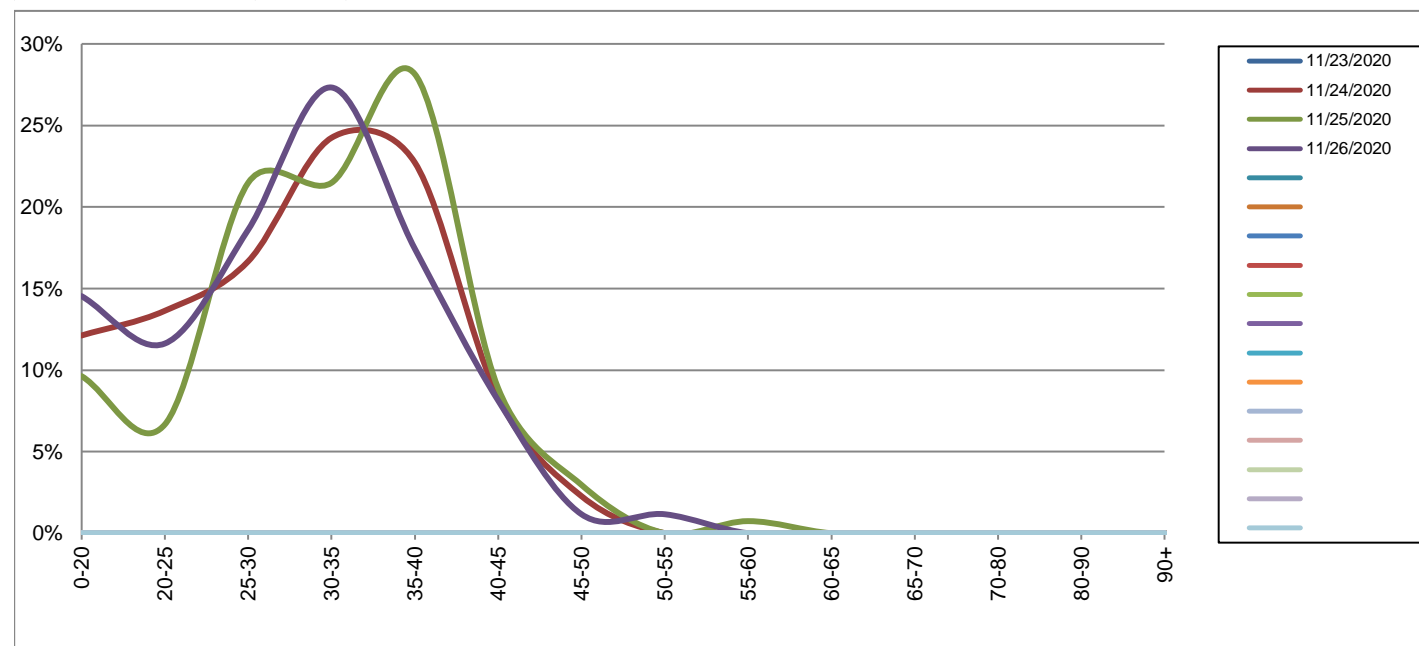
Southbound

November 23, 2020 to November 26, 2020

Daily Speed Bin Percentages															Daily Speed Bin Volumes														Total	Avg. Speed
Bin #	1	2	3	4	5	6	7	8	9	10	11	12	13	14	1	2	3	4	5	6	7	8	9	10	11	12	13	14		
Bin Speeds	0-20	20-25	25-30	30-35	35-40	40-45	45-50	50-55	55-60	60-65	65-70	70-80	80-90	90+	0-20	20-25	25-30	30-35	35-40	40-45	45-50	50-55	55-60	60-65	65-70	70-80	80-90	90+		
11/23/2020															0	0	0	0	0	0	0	0	0	0	0	0	0	0	0	
11/24/2020	12.1%	13.6%	16.7%	24.2%	22.7%	8.3%	2.3%	0.0%	0.0%	0.0%	0.0%	0.0%	0.0%	0.0%	16	18	22	32	30	11	3	0	0	0	0	0	0	0	132	30
11/25/2020	9.6%	6.7%	21.5%	21.5%	28.1%	8.9%	3.0%	0.0%	0.7%	0.0%	0.0%	0.0%	0.0%	0.0%	13	9	29	29	38	12	4	0	1	0	0	0	0	0	135	32
11/26/2020	14.5%	11.6%	18.6%	27.3%	17.4%	8.1%	1.2%	1.2%	0.0%	0.0%	0.0%	0.0%	0.0%	0.0%	25	20	32	47	30	14	2	2	0	0	0	0	0	0	172	29
Total	12.3%	10.7%	18.9%	24.6%	22.3%	8.4%	2.1%	0.5%	0.2%	0.0%	0.0%	0.0%	0.0%	0.0%	54	47	83	108	98	37	9	2	1	0	0	0	0	439	30	

Speed Data Summary

Bin #	1	2	3	4	5	6	7	8	9	10	11	12	13	14	Total
Bin Speeds	0-20	20-25	25-30	30-35	35-40	40-45	45-50	50-55	55-60	60-65	65-70	70-80	80-90	90+	
Survey Total	54	47	83	108	98	37	9	2	1	0	0	0	0	0	439
% Total	12.3%	10.7%	18.9%	24.6%	22.3%	8.4%	2.1%	0.5%	0.2%	0.0%	0.0%	0.0%	0.0%	0.0%	100%
Accumulated %	12.3%	23.0%	41.9%	66.5%	88.8%	97.3%	99.3%	99.8%	100.0%	100.0%	100.0%	100.0%	100.0%	100.0%	
Inverse Accum. %	87.7%	77.0%	58.1%	33.5%	11.2%	2.7%	0.7%	0.2%	0.0%	0.0%	0.0%	0.0%	0.0%	0.0%	
Average Speed	30 KM/H														



Site notes:

Cumberland Rd between Reynolds Rd and Union St

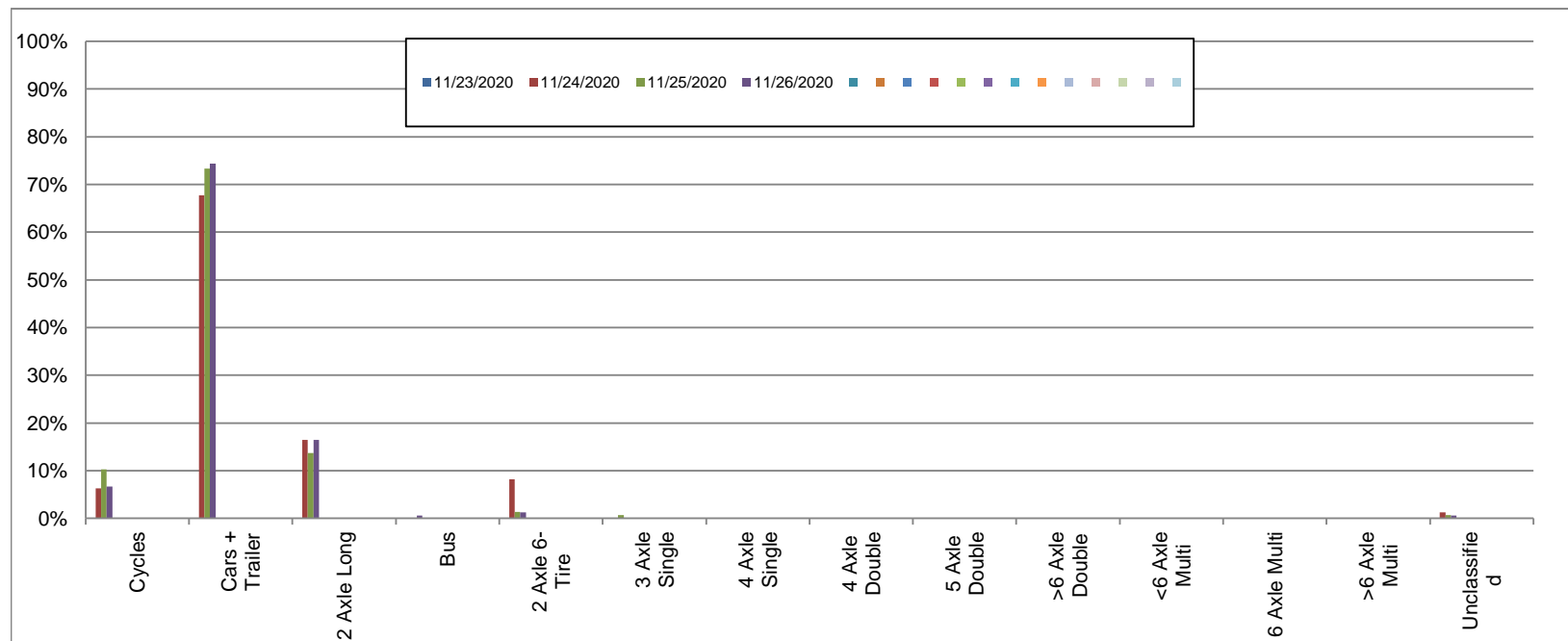
Northbound

November 23, 2020 to November 26, 2020

Daily Class Bin Percentages															Daily Class Bin Volumes											Total Volume				
Bin #	1	2	3	4	5	6	7	8	9	10	11	12	13	14	1	2	3	4	5	6	7	8	9	10	11		12	13	14	
Bin Class	Cycles	Cars + Trailer	2 Axle Long	Bus	2 Axle 6-Tire	3 Axle Single	4 Axle Single	4 Axle Double	5 Axle Double	>6 Axle Double	<6 Axle Multi	6 Axle Multi	>6 Axle Multi	Unclassified	Cycles	Cars + Trailer	2 Axle Long	Bus	2 Axle 6-Tire	3 Axle Single	4 Axle Single	4 Axle Double	5 Axle Double	>6 Axle Double	<6 Axle Multi	6 Axle Multi	>6 Axle Multi	Unclassified		
11/23/2020															0	0	0	0	0	0	0	0	0	0	0	0	0	0	0	0
11/24/2020	6.3%	67.7%	16.5%	0.0%	8.2%	0.0%	0.0%	0.0%	0.0%	0.0%	0.0%	0.0%	0.0%	1.3%	10	107	26	0	13	0	0	0	0	0	0	0	0	0	2	158
11/25/2020	10.3%	73.3%	13.7%	0.0%	1.4%	0.7%	0.0%	0.0%	0.0%	0.0%	0.0%	0.0%	0.0%	0.7%	15	107	20	0	2	1	0	0	0	0	0	0	0	0	1	146
11/26/2020	6.7%	74.4%	16.5%	0.6%	1.2%	0.0%	0.0%	0.0%	0.0%	0.0%	0.0%	0.0%	0.0%	0.6%	11	122	27	1	2	0	0	0	0	0	0	0	0	0	1	164
Total	7.7%	71.8%	15.6%	0.2%	3.6%	0.2%	0.0%	0.0%	0.0%	0.0%	0.0%	0.0%	0.0%	0.9%	36	336	73	1	17	1	0	0	0	0	0	0	0	4	468	

Class Data Summary

Bin #	1	2	3	4	5	6	7	8	9	10	11	12	13	14	Total Volume
Bin Class	Cycles	Cars + Trailer	2 Axle Long	Bus	2 Axle 6-Tire	3 Axle Single	4 Axle Single	4 Axle Double	5 Axle Double	>6 Axle Double	<6 Axle Multi	6 Axle Multi	>6 Axle Multi	Unclassified	Total Volume
Survey Total	36	336	73	1	17	1	0	0	0	0	0	0	0	4	468
% Total	7.7%	71.8%	15.6%	0.2%	3.6%	0.2%	0.0%	0.0%	0.0%	0.0%	0.0%	0.0%	0.0%	0.9%	100%
Accumulated %	7.7%	79.5%	95.1%	95.3%	98.9%	99.1%	99.1%	99.1%	99.1%	99.1%	99.1%	99.1%	99.1%	100.0%	
Inv. Accum. %	92.3%	20.5%	4.9%	4.7%	1.1%	0.9%	0.9%	0.9%	0.9%	0.9%	0.9%	0.9%	0.9%	0.0%	



Classification Descriptions

Bin #	Bin Description
1	Motorcycles
2	Passenger cars, including those with recreational trailers
3	2-axle pick-ups, vans, and RVs, including those with recreational trailers
4	Buses
5	2-axle, 6-tire single units
6	3-axle single units
7	4-axle single units
8	3-axle or 4-axle double unit
9	5-axle double unit
10	6-, 7-, or 8-axle double unit
11	5-axle multiple unit
12	6-axle multiple unit
13	7-or-more-axle multiple unit
14	Vehicles that could not be classified

Site notes:

Cumberland Rd between Reynolds Rd and Union St

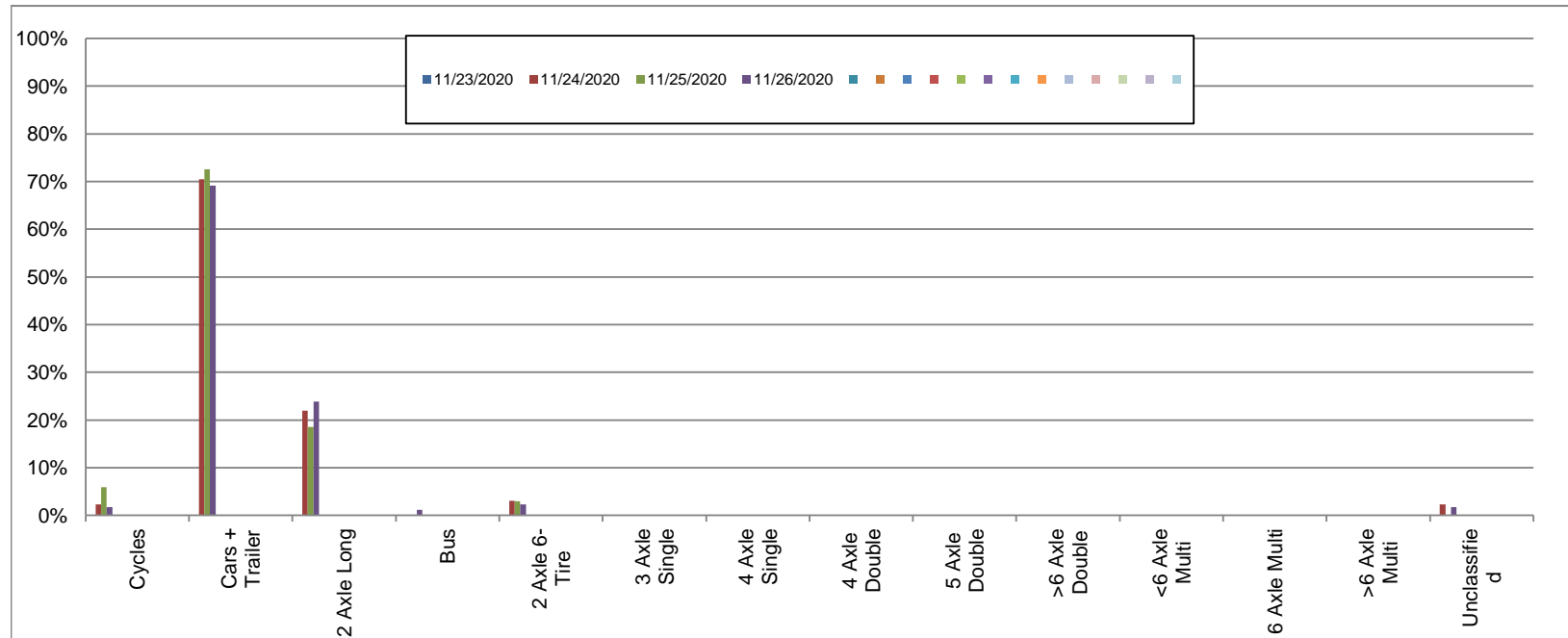
Southbound

November 23, 2020 to November 26, 2020

Daily Class Bin Percentages															Daily Class Bin Volumes											Total Volume			
Bin #	1	2	3	4	5	6	7	8	9	10	11	12	13	14	1	2	3	4	5	6	7	8	9	10	11		12	13	14
Bin Class	Cycles	Cars + Trailer	2 Axle Long	Bus	2 Axle 6-Tire	3 Axle Single	4 Axle Single	4 Axle Double	5 Axle Double	>6 Axle Double	<6 Axle Multi	6 Axle Multi	>6 Axle Multi	Unclassified	Cycles	Cars + Trailer	2 Axle Long	Bus	2 Axle 6-Tire	3 Axle Single	4 Axle Single	4 Axle Double	5 Axle Double	>6 Axle Double	<6 Axle Multi	6 Axle Multi	>6 Axle Multi	Unclassified	
11/23/2020															0	0	0	0	0	0	0	0	0	0	0	0	0	0	
11/24/2020	2.3%	70.5%	22.0%	0.0%	3.0%	0.0%	0.0%	0.0%	0.0%	0.0%	0.0%	0.0%	0.0%	2.3%	3	93	29	0	4	0	0	0	0	0	0	0	0	0	3
11/25/2020	5.9%	72.6%	18.5%	0.0%	3.0%	0.0%	0.0%	0.0%	0.0%	0.0%	0.0%	0.0%	0.0%	0.0%	8	98	25	0	4	0	0	0	0	0	0	0	0	0	0
11/26/2020	1.7%	69.2%	23.8%	1.2%	2.3%	0.0%	0.0%	0.0%	0.0%	0.0%	0.0%	0.0%	0.0%	1.7%	3	119	41	2	4	0	0	0	0	0	0	0	0	0	3
Total	3.2%	70.6%	21.6%	0.5%	2.7%	0.0%	0.0%	0.0%	0.0%	0.0%	0.0%	0.0%	0.0%	1.4%	14	310	95	2	12	0	0	0	0	0	0	0	0	6	439

Class Data Summary

Bin #	1	2	3	4	5	6	7	8	9	10	11	12	13	14	Total Volume
Bin Class	Cycles	Cars + Trailer	2 Axle Long	Bus	2 Axle 6-Tire	3 Axle Single	4 Axle Single	4 Axle Double	5 Axle Double	>6 Axle Double	<6 Axle Multi	6 Axle Multi	>6 Axle Multi	Unclassified	
Survey Total	14	310	95	2	12	0	0	0	0	0	0	0	0	6	439
% Total	3.2%	70.6%	21.6%	0.5%	2.7%	0.0%	0.0%	0.0%	0.0%	0.0%	0.0%	0.0%	0.0%	1.4%	100%
Accumulated %	3.2%	73.8%	95.4%	95.9%	98.6%	98.6%	98.6%	98.6%	98.6%	98.6%	98.6%	98.6%	98.6%	100.0%	
Inv. Accum. %	96.8%	26.2%	4.6%	4.1%	1.4%	1.4%	1.4%	1.4%	1.4%	1.4%	1.4%	1.4%	1.4%	0.0%	



Classification Descriptions

Bin #	Bin Description
1	Motorcycles
2	Passenger cars, including those with recreational trailers
3	2-axle pick-ups, vans, and RVs, including those with recreational trailers
4	Buses
5	2-axle, 6-tire single units
6	3-axle single units
7	4-axle single units
8	3-axle or 4-axle double unit
9	5-axle double unit
10	6-, 7-, or 8-axle double unit
11	5-axle multiple unit
12	6-axle multiple unit
13	7-or-more-axle multiple unit
14	Vehicles that could not be classified

Site notes: